



EXPORT PRICE INDEX

AUSTRALIA

EMBARGO: 11:30AM (CANBERRA TIME) THURS 21 OCT 1999

SEPTEMBER QTR KEY FIGURES

	% change Jun Qtr 1999 to Sep Qtr 1999	% change Sep Qtr 1998 to Sep Qtr 1999
All groups	1.0	-10.3
Live animals, animal products	4.3	-1.0
Vegetable products	-3.7	-19.4
Prepared foodstuffs	-1.0	-15.0
Mineral products	0.8	-11.5
Products of chemical or allied industries	3.8	-7.4
Wool and cotton fibres	0.8	-10.5
Gold, diamonds and coin	-3.6	-15.2
Base metals and articles of base metals	6.1	-6.4
Machinery and mechanical appliances	0.0	-1.7
Motor vehicles, aircraft and vessels	0.3	-5.6

SEPTEMBER QTR KEY POINTS

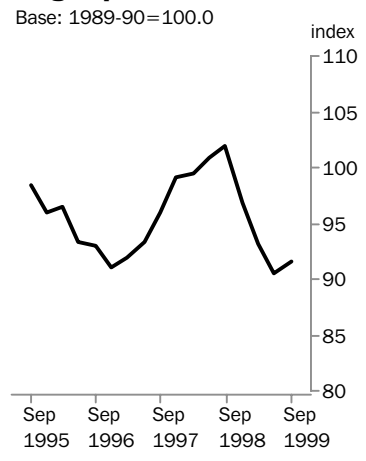
ALL GROUPS INDEX

- The Export Price Index increased by 1.0% in the September quarter. The depreciation of the Australian dollar against some key trading currencies contributed to the increase.

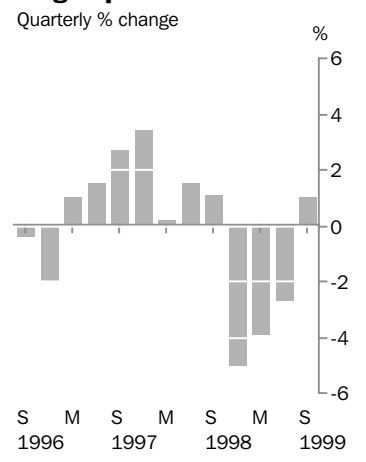
MAJOR MOVEMENTS

- Prices for aluminium rose due to an increase in world market prices.
- There were continued increases in international prices for crude oil and petroleum products.
- Price decreases for a range of items partly offset the overall increase.

All groups



All groups



▪ For further information about these and related statistics, contact Jenny Ciceran on Canberra 02 6252 5541, or Client Services in any ABS office shown on the back cover of this publication.

NOTES

FORTHCOMING ISSUES

ISSUE (Quarter)

RELEASE DATE

December 1999

21 January 2000

March 2000

20 April 2000



CHANGES IN THIS ISSUE

There are no changes in this issue.



RELATED STATISTICS

For more information about statistics in this publication and the availability of related unpublished statistics, contact Jenny Ciceran on fax (02) 6252 7060, or email jenny.ciceran@abs.gov.au.



W. McLennan
Australian Statistician

EXPORT PRICE INDEX, All Groups

<i>Period</i>	<i>Index numbers(a)</i>	<i>% change from corresponding quarter of previous year</i>	<i>% change from previous period</i>
1995-1996	96.1		1.5
1996-1997	92.4		-3.9
1997-1998	98.9		7.0
1998-1999	95.7		-3.2
1995			
September	98.5	8.8	-1.2
December	96.0	3.7	-2.5
1996			
March	96.5	0.7	0.5
June	93.4	-6.3	-3.2
September	93.0	-5.6	-0.4
December	91.1	-5.1	-2.0
1997			
March	92.0	-4.7	1.0
June	93.4	0.0	1.5
September	95.9	3.1	2.7
December	99.2	8.9	3.4
1998			
March	99.4	8.0	0.2
June	100.9	8.0	1.5
September	102.0	6.4	1.1
December	96.9	-2.3	-5.0
1999			
March	93.1	-6.3	-3.9
June	90.6	-10.2	-2.7
September	91.5	-10.3	1.0

(a) Base of each index: 1989-90 = 100.0

EXPORT PRICE INDEX(a), AHECC and ANZSIC Contribution to All Groups Index

Category	June Qtr 1999	September Qtr 1999	Change
All groups index	90.6	91.5	0.9
SELECTED AHECC SECTIONS: Contribution to All Groups Index (index points)			
01 Live animals, animal products	8.69	9.06	0.37
02 Vegetable products	7.36	7.08	-0.28
04 Prepared foodstuffs	4.13	4.09	-0.04
05 Mineral products	28.53	28.77	0.24
06 Products of chemical or allied industries	6.65	6.91	0.26
11 Wool and cotton fibres	8.04	8.11	0.07
14 Gold, diamonds and coin	6.07	5.86	-0.21
15 Base metals and articles of base metals	9.91	10.52	0.61
16 Machinery and mechanical appliances	3.88	3.88	0.00
17 Motor vehicles, aircraft and vessels	2.29	2.30	0.01
SELECTED ANZSIC SUBDIVISIONS: Contribution to All Groups Index (index points)			
01 Agriculture	16.32	16.22	-0.10
11 Coal mining	11.24	10.82	-0.42
13 Metal ore mining	10.66	10.58	-0.08
21 Food, beverages and tobacco	11.82	12.04	0.22
25 Petroleum, coal, chemical and associated products	10.24	10.87	0.63
27 Metal products	9.91	10.52	0.61
28 Machinery and equipment	2.29	2.30	0.01

(a) For an explanation of this table see paragraph 13 of the Explanatory Notes

EXPORT PRICE INDEX(a), By Selected AHECC Section

Period	Live animals, animal products (01)	Vegetable products (02)	Prepared foodstuffs (04)	Mineral products (05)	Products of chemical or allied industries (06)	Wool and cotton fibres (11)	Gold, diamonds and coin (14)	Base metals and articles of base metals (15)	Machinery and mechanical appliances (16)	Motor vehicles, aircraft and vessels (17)
1995-1996	98.8	101.2	101.3	100.9	89.5	72.7	102.3	97.0	95.8	107.3
1996-1997	92.7	98.1	99.8	103.0	86.9	67.6	92.1	86.1	88.5	103.6
1997-1998	100.0	96.3	109.7	113.7	94.9	75.8	89.8	94.1	89.1	110.0
1998-1999	100.7	90.9	102.8	114.6	95.6	61.4	93.1	85.6	90.3	113.0
1995										
September	103.9	91.4	101.8	100.7	89.2	84.4	103.9	104.7	97.3	109.4
December	101.0	97.5	102.7	100.2	86.8	72.8	102.4	98.7	95.5	108.4
1996										
March	99.5	107.7	101.9	102.1	91.1	68.6	105.1	94.5	96.0	106.9
June	90.9	108.0	98.8	100.4	90.9	65.0	97.7	89.9	94.5	104.4
September	90.3	109.7	99.6	100.9	89.1	67.2	96.7	84.5	92.0	104.1
December	91.9	97.2	99.8	101.7	86.9	65.5	93.8	80.7	88.3	103.1
1997										
March	93.0	92.7	99.8	104.3	85.1	66.7	89.5	88.2	86.6	103.1
June	95.6	92.6	99.9	105.1	86.5	70.9	88.4	90.8	87.0	104.2
September	96.3	91.7	104.1	107.9	88.4	77.8	86.7	96.0	87.6	105.8
December	100.9	95.2	110.1	113.7	93.5	77.2	88.5	96.8	89.7	109.0
1998										
March	102.2	97.2	112.0	114.5	97.6	75.9	88.5	92.7	89.3	111.4
June	100.5	101.0	112.7	118.5	100.0	72.3	95.4	91.0	89.7	113.9
September	103.7	100.2	109.5	122.4	100.7	67.6	98.0	93.3	90.8	117.1
December	100.9	90.9	104.4	117.8	98.5	59.2	95.8	86.1	90.3	112.9
1999										
March	99.6	88.6	103.3	110.8	93.5	58.8	92.5	80.6	90.9	111.6
June	98.5	83.9	94.0	107.4	89.8	60.0	86.2	82.3	89.3	110.2
September	102.7	80.8	93.1	108.3	93.2	60.5	83.1	87.3	89.3	110.5

(a) Base of each index: 1989-90 = 100.0

EXPORT PRICE INDEX(a), By Selected SITC Section

<i>Period</i>	<i>Food and live animals (0)</i>	<i>Crude materials (2)</i>	<i>Mineral fuels (3)</i>	<i>Chemicals and related products (5)</i>	<i>Manufactured goods by material (6)</i>	<i>Machinery and transport equipment (7)</i>	<i>Miscellaneous manufactured articles (8)</i>
1995-1996	100.3	83.4	108.0	91.0	97.4	99.6	106.2
1996-1997	95.6	81.8	110.8	88.6	86.5	93.4	103.2
1997-1998	99.6	90.3	121.8	96.0	93.7	95.9	108.2
1998-1999	96.6	84.0	119.7	96.2	86.8	97.7	111.7
1995							
September	98.5	89.3	107.7	90.8	105.3	101.3	108.9
December	100.0	83.4	107.2	87.7	99.1	99.7	108.1
1996							
March	103.4	81.6	109.6	92.6	95.0	99.6	105.8
June	99.3	79.2	107.5	92.9	90.3	97.8	102.1
September	99.5	80.9	108.2	90.7	85.5	95.9	103.2
December	95.0	80.0	110.0	88.5	81.6	93.1	103.1
1997							
March	93.5	81.8	112.3	86.8	88.3	92.0	103.4
June	94.5	84.5	112.7	88.5	90.6	92.6	102.9
September	95.2	89.1	115.1	90.0	95.1	93.5	104.5
December	99.5	90.3	123.1	95.0	96.2	96.0	108.5
1998							
March	101.4	90.2	123.4	98.2	92.3	96.5	109.1
June	102.1	91.4	125.6	100.7	91.2	97.6	110.7
September	102.8	90.9	128.6	101.0	93.9	99.4	114.1
December	96.9	84.4	123.8	99.4	87.2	97.7	109.6
1999							
March	95.3	81.7	113.8	93.8	82.3	97.7	112.7
June	91.3	79.1	112.5	90.4	83.7	96.1	110.2
September	91.5	79.2	114.5	93.5	88.6	96.3	110.0

(a) Base of each index: 1989-90 = 100.0

EXPORT PRICE INDEX(a), By Selected ANZSIC Industry of Origin Division and Subdivision

Period	Agriculture, forestry and fishing (A)	Coal mining (11)	Metallic ore mining (13)	Mining (B)	Food, beverages and tobacco (21)	Petroleum, coal, chemical and associated products (25)	Manufacturing (C)
1995-1996	85.1	103.6	93.5	100.0	94.3	107.0	98.0
1996-1997	80.6	102.9	94.9	101.3	90.2	107.1	92.5
1997-1998	84.8	116.9	105.2	112.7	98.7	114.0	97.7
1998-1999	73.8	116.4	110.4	114.4	98.3	112.6	95.6
1995							
September	88.9	104.3	93.3	100.4	96.5	105.8	100.7
December	83.7	105.2	93.1	100.2	96.6	102.5	98.2
1996							
March	85.0	103.3	94.3	100.3	95.4	110.8	98.7
June	82.7	101.4	93.4	99.1	88.8	109.0	94.4
September	84.7	102.9	93.4	99.8	88.5	107.1	92.6
December	78.9	101.5	92.9	99.4	90.0	108.5	91.7
1997							
March	78.0	103.0	95.9	102.5	90.7	106.2	92.4
June	80.8	104.3	97.3	103.6	91.6	106.6	93.2
September	84.7	108.1	100.8	106.7	92.9	108.5	94.9
December	86.0	117.0	103.4	112.1	97.8	114.7	98.0
1998							
March	84.5	119.3	104.8	113.8	102.3	115.1	98.3
June	83.8	123.3	111.8	118.1	101.9	117.8	99.4
September	81.3	128.8	116.8	122.9	102.0	117.1	100.4
December	72.6	122.4	112.4	117.5	99.3	115.9	97.2
1999							
March	71.3	110.9	109.5	111.0	98.1	109.0	93.4
June	70.0	103.4	103.0	106.2	93.9	108.5	91.5
September	69.6	99.5	102.3	105.7	95.7	115.2	93.8

(a) Base of each index: 1989-90 = 100.0

EXPLANATORY NOTES

INTRODUCTION	<p>1 This publication presents index numbers measuring changes in the prices of exports of merchandise from Australia—the Export Price Index. It is calculated on a reference base of 1989–90=100.0.</p>
SCOPE	<p>2 The Export Price Index includes re-exports of merchandise (that is, goods which are imported into Australia and exported at a later date without physical transformation). The index numbers for each quarter relate to prices of those exports of merchandise that are physically shipped from Australia during that quarter.</p>
CLASSIFICATION	<p>3 Index numbers for selected sections of the Australian Harmonised Export Commodity Classification (AHECC) are provided in Table 3 while index numbers for selected sections of the Standard International Trade Classification (SITC), Revision 3 are provided in Table 4.</p> <p>4 Table 5 contains index numbers for selected Divisions and Subdivisions, on an ‘industry of origin’ basis, of the Australian and New Zealand Standard Industrial Classification (ANZSIC). The ‘industry of origin’ is the industry in which the exported commodity is primarily produced, determined in accordance with the classification rules of the ANZSIC. It is therefore not necessarily identical with the industry from which the export transactions are actually made. For instance, many exports are made by traders or by marketing authorities, but these exports are classified to the appropriate producing industries, rather than to the wholesale trading industries from which they are actually exported.</p>
ITEMS AND WEIGHTS	<p>5 The index is a fixed weights index. The commodities directly represented in the index (the index items), were selected on the basis of their export values in 1988–89. They constituted approximately 95% of the total value of exports of merchandise from Australia that year. The selected items were allocated weights in accordance with the average value of exports for each item in 1988–89. These weights were then revalued to reflect 1989–90 price levels. Many of the items carry not only their own weight but also the weight of unpriced commodities whose prices are considered to move in a similar manner. The weighting pattern of the Export Price Index, i.e. the percentage contributions for index items and groups, was shown in the September 1990 issue of this publication.</p>
PRICE MEASUREMENT	<p>6 In general, prices are obtained from major exporters of the selected items included in the index. The point of pricing for the Export Price Index is the point at which the goods physically leave Australia, i.e. prices are on ‘free on board’ basis (f.o.b.) at main Australian ports of export.</p> <p>7 As the prices used in the index are expressed in Australian currency, changes in the relative value of the Australian dollar and overseas currencies can have a direct impact on price movements for the many commodities that are sold in currencies other than Australian dollars. Where exports are sold at prices expressed in terms of a foreign currency and forward exchange cover is used, the prices in the index <i>exclude</i> forward exchange cover.</p>

EXPLANATORY NOTES

PRICE MEASUREMENT *continued*

8 The price series used relate to specified standards, grades, types, etc. of each commodity. The aim is to incorporate in the index, price changes for exports of representative goods of constant quality. Wherever possible, prices to predominant export markets are used for each of the specified goods priced, in order to lessen the impact of price variations attributable solely to changes, over time, in market destinations. In most cases prices are combined using fixed weights between markets. Weights between markets are reviewed from time to time and revised where necessary.

INDEX NUMBERS

9 Index numbers for financial years are simple averages of quarterly index numbers.

REVISIONS

10 In cases where more complete information is obtained after index numbers for a period have been published, or it is discovered that incorrect prices have been used in compiling the indexes, revisions to index numbers may occur in subsequent issues of this publication.

ANALYSIS OF INDEX CHANGES

11 Care should be exercised when interpreting quarter-to-quarter movements in the indexes as short-term movements do not necessarily indicate changes in trend.

12 Movements in indexes from one period to another can be expressed either as changes in 'index points' or as percentage changes. The following example illustrates the method of calculating index points changes and percentage changes between any two periods.

All groups index numbers—

September Quarter 1999	91.5	(see Table 1)
less September Quarter 1998	102.0	(see Table 1)
Change in index points	-10.5	
Percentage change	$\frac{-10.5}{102.0}$	x 100 = -10.3

13 Table 2 provides an analysis of the contribution which selected categories of exports make to the All groups index. For example, Mineral products contributed 28.77 index points to the All groups index number of 91.5 for September Quarter 1999 and 0.24 index points to the net change of 0.9 index points.

FURTHER INFORMATION

14 The September 1990 issue of this publication contains a more detailed description of the index.

15 Further information on the index is presented in the publication *Producer and Foreign Trade Price Indexes: Concepts, Sources and Methods* (Cat. no. 6419.0).

16 A detailed description of previous Export Price Indexes is contained in *Year Book Australia* No. 55, 1969, pages 256–7 and in *Year Book Australia* No. 58, 1972, pages 240–2 and in the July 1979 issue of this publication.

EXPLANATORY NOTES

RELATED PUBLICATIONS

17 Users may also wish to refer to the following publications which are available from ABS Bookshops:

- *Import Price Index, Australia* (Cat. no. 6414.0)
- *Price Indexes of Articles Produced by Manufacturing Industry, Australia* (Cat. no. 6412.0)
- *Price Indexes of Materials Used in Manufacturing Industries, Australia* (Cat. no. 6411.0).

18 Other ABS publications that may be of interest include *Balance of Payments, Australia* (Cat. no. 5302.0).

19 Current publications produced by the ABS are listed in the *Catalogue of Publications and Products, Australia* (Cat. no. 1101.0). The ABS also issues on Tuesdays and Fridays, a *Release Advice* (Cat. no. 1105.0) which lists publications to be released in the next few days. The Catalogue and Release Advice are available from any ABS office.

UNPUBLISHED STATISTICS

20 As well as the statistics included in this and related publications, the ABS may have other relevant unpublished data available. Inquiries should be made to Jenny Ciceran on 02 6252 5541 or any ABS office.

SYMBOLS AND OTHER USAGES

AHECC	Australian Harmonised Export Commodity Classification
ANZSIC	Australian and New Zealand Standard Industrial Classification
f.o.b.	free on board
SITC	Standard International Trade Classification
r	revised

SELF-HELP ACCESS TO STATISTICS

- CPI INFOLINE* For current and historical Consumer Price Index data, call 1902 981 074 (call cost 75c per minute).
- DIAL-A-STATISTIC* For the latest figures for National Accounts, Balance of Payments, Labour Force, Average Weekly Earnings, Estimated Resident Population and the Consumer Price Index call 1900 986 400 (call cost 75c per minute).
- INTERNET* www.abs.gov.au
- LIBRARY* A range of ABS publications is available from public and tertiary libraries Australia-wide. Contact your nearest library to determine whether it has the ABS statistics you require.

WHY NOT SUBSCRIBE?

- PHONE* +61 1300 366 323
- FAX* +61 03 9615 7848

CONSULTANCY SERVICES

ABS offers consultancy services on a user pays basis to help you access published and unpublished data. Data that is already published and can be provided within 5 minutes is free of charge. Statistical methodological services are also available. Please contact:

<i>INQUIRIES</i>	<i>City</i>	<i>By phone</i>	<i>By fax</i>
	Canberra	02 6252 6627	02 6207 0282
	Sydney	02 9268 4611	02 9268 4668
	Melbourne	03 9615 7755	03 9615 7798
	Brisbane	07 3222 6351	07 3222 6283
	Perth	08 9360 5140	08 9360 5955
	Adelaide	08 8237 7400	08 8237 7566
	Hobart	03 6222 5800	03 6222 5995
	Darwin	08 8943 2111	08 8981 1218

POST Client Services, ABS, PO Box 10, Belconnen ACT 2616

EMAIL client.services@abs.gov.au



2640500009998
ISSN 1031-0290

RRP \$15.00